

Flowline Products

LT Plug Valve

C&C's Low Torque Plug Valves are built to meet and exceed the industry's most stringent requirements in high pressure and erosive service conditions. Our plug valves are constructed of high strength forged alloy steel bodies and abrasion resistant plug inserts. This ensures that C&C LT Plug Valves are not only reliable, but built to last.

Our plug valve parts are fully interchangeable with most well-known manufacturers and can be integrated into existing systems. All C&C Plug Valves are made in compliance with API 6A and ISO 9001. They are easy to operate and maintain, and competitively priced to position themselves among the most desirable quarter turn high performance valves in the world.



2"x2" MxF

15,000 NSCWP
22,500 Tested
Integral W/1502
Union Connections
Bore Size 2.06"
Standard Service
NACE Service*
*NACE Valves are derated
to 10,000 NSCWP

3"x 3" MxF

15,000 NSCWP
22,500 Tested
Integral W/1502
Union Connections
Bore Size 3.08"
Standard Service

2"x2" FNPTxFNPT

10,000 NSCWP
15,000 Tested
Line Pipe Connections
Bore Size 2.06"
Standard Service

2"x1" MxF

15,000 NSCWP
22,500 Tested
Integral W/1502
Union Connections
Bore Size 1"
Standard Service
* 1" x 1" available
upon request

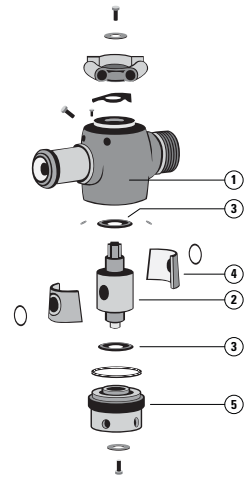


C&C INDUSTRIES, INC.

Flowline Products LT Plug Valve



- ① **Valve Body**
4140 Forged Low Alloy Steel
API 6A ASTM
- ② **Plug**
4140 Forged Low Alloy Steel + HFI (STD)
17-4 PH Stainless Steel (NACE)
API 6A, PSL 3 ASTM
- ③ **Plug Seals**
Buna-N with Brass Backing (STD)
HNBR-90 with Stainless Steel Backing (NACE)
- ④ **Inserts**
Ductile Iron A395, Phosphate Coated (STD)
Aluminum Bronze (NACE)
- ⑤ **Adjusting Nut**
4140 Forged Low Alloy Steel
API 6A ASTM



- Designed to positively shut off or open fully - Not for throttling
- Balance to reduce operating torque
- Phosphate Coating
- High Frequency Induction (HFI)
- Full documentation
- Off the shelf availability of spare parts
- Test and inspection - 100%

Parts Description

DWG No.	Description	Qty	Valve Size and Part No.				
			Figure 1				Figure 2
			1"	2"	2" NACE	3"	3" Gear OP
3	Insert Set	1	BH0027	BH0027	BH0049	BH0068	BH0068
2	Plug	1	BH0024	BH0024	BH0070	BH0056	BH0056
8,6,5	Seal Kit	1	BH0067	BH0067	BH0068	BH0066	BH0066
N/A	Repair Kit	1	BH0228-KIT	BH0228-KIT	BH0230-KIT	BH0229-KIT	BH0229-KIT
14	Roll Pin	2	BH0003	BH0003	BH0003	BH0003	BH0003
N/A	Grease Fitting	1	BH0226	BH0226	BH0226	BH0226	BH0226
12	Handle Adapter	1	BH0062	BH0062	BH0062	BH0062	N/A
11	Stop Collar	1	BH0061	BH0061	BH0061	BH0061	N/A

Plug Valves

Fig.	Size	Description	Operator Type	PSI NSCWP	A	B	C	Part No.	Weight
1	1" X 2"	Figure 1502 M X F	Manual	15,000	10.56"	9.25"	N/A	BH0023	51.80
1	2" X 2"	Threaded FNPT	Manual	10,000	8.5"	10.625"	N/A	BH0032	78.00
1	2" X 2" STD	Figure 1502 M X F	Manual	15,000	13.875"	10.625"	N/A	BH0006	97.90
1	2" X 2" NACE	Figure 1502 M X F	Manual	10,000	13.875"	10.625"	N/A	BH0109	97.90
1	3" X 3"	Figure 1502 M X F	Manual	15,000	17"	13"	N/A	BH0055M	210.00
2	3" X 3"	Figure 1502 M X F	Gear Operated	15,000	17"	15.875"	21.125"	BH0055S	312.00

Figure 1

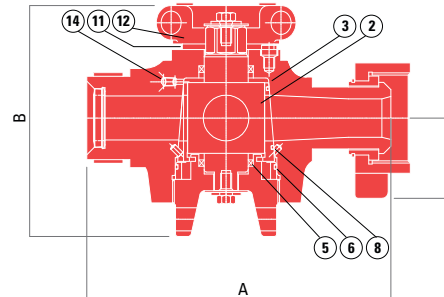


Figure 2

