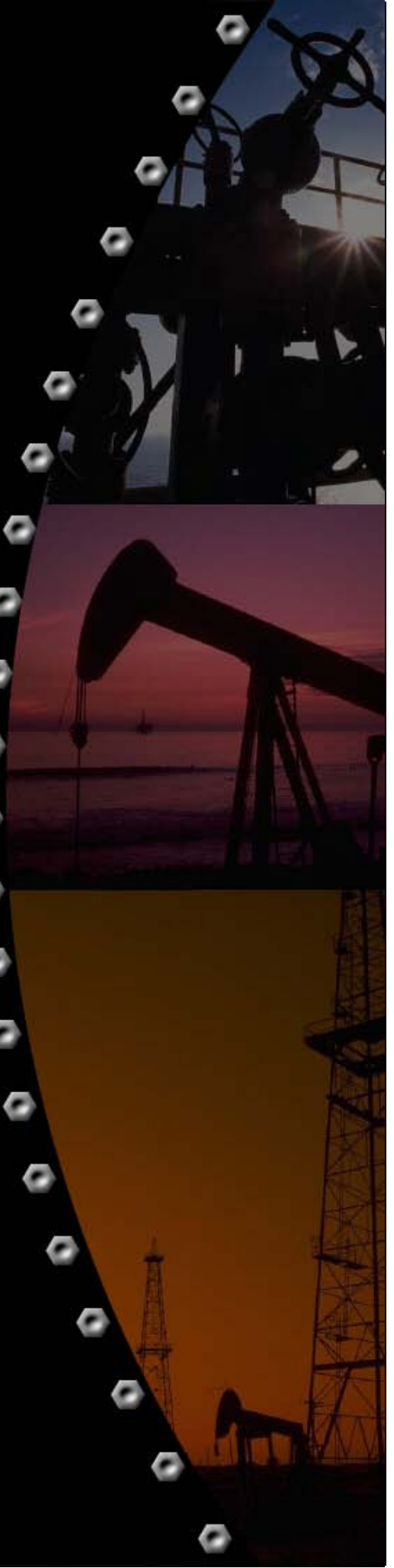
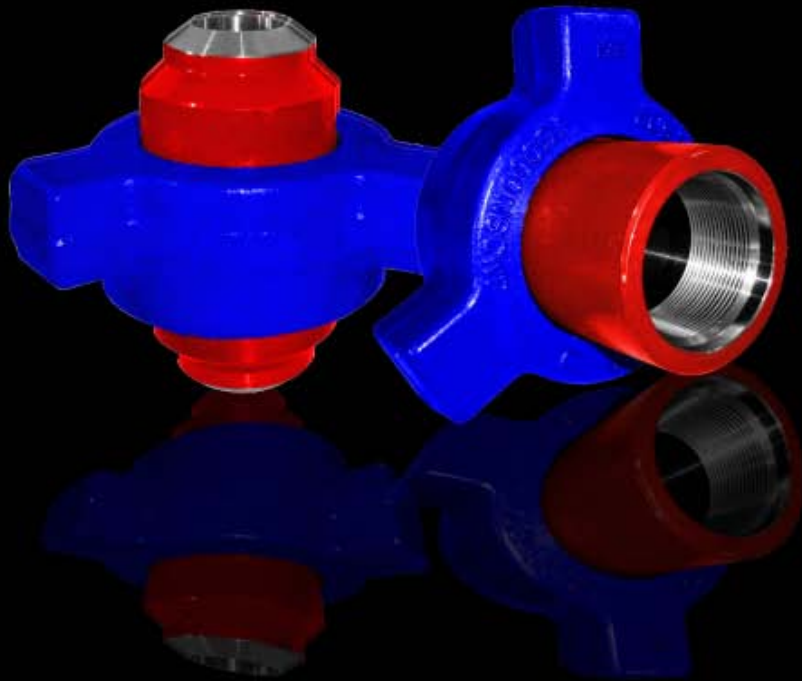




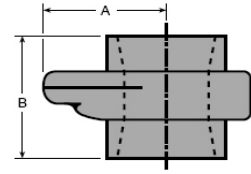
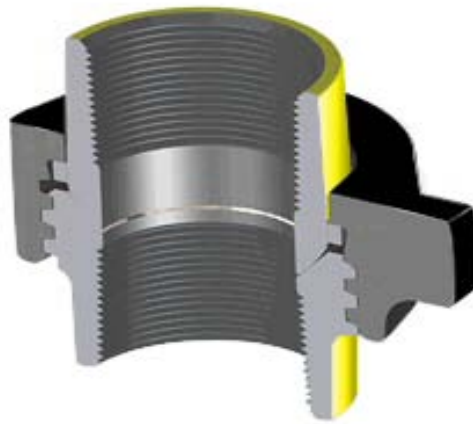
Hammer Unions



WORLD CLASS QUALITY PRODUCTS

FIGURE 100

C&C's figure 100 is an economical union with precision machined metal-to-metal sealing surfaces. Recommended for air, water, oil or gas to 1,000 PSI NSCWP.



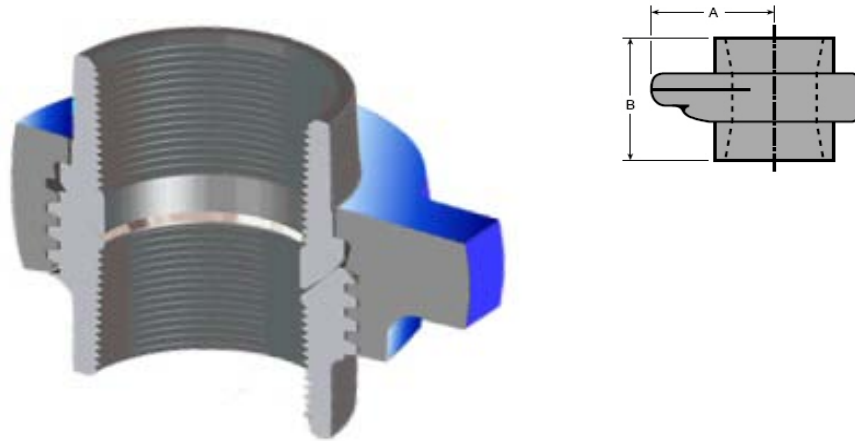
Non-Shock Cold Working Pressure Ratings (PSI)

| Standard Service | | H2S Service | |
|------------------|------|-------------|------|
| CWP | Test | CWP | Test |
| 1000 | 1500 | - | - |

| Nominal Pipe Size | 2 | 2.5 | 3 | 4 | 5 | 6 | 8 |
|--------------------------------|---------------|--------------|--------------|--------------|--------------|--------------|--------------|
| Qty. / Box Part No. | 16 U010200 | 8 U012500 | 6 U010300 | 4 U010400 | 2 U010500 | 1 U010600 | 1 U010800 |
| Clearance Radius (A) | 2.91 | 3.63 | 4.00 | 4.69 | 5.63 | 6.50 | 7.81 |
| End to End Threaded (B) | 3.63 | 4.28 | 4.88 | 5.75 | 7.88 | 6.72 | 7.19 |
| Weight | 6.60 | 10.00 | 14.20 | 22.75 | 29.00 | 48.00 | 57.00 |
| Material, Sub Material, Nut | A105 A105 | A105 D.I. | A105 A105 | D.I. D.I. | D.I. D.I. | D.I. D.I. | D.I. D.I. |

FIGURE 200

C&C's Figure 200 is a union of great utility. It meets most requirements in the medium pressure ranges. Precision seating surfaces assure dependable pressure seal. Like parts in each size are interchangeable with other manufactures' unions. Recommended for air, water, oil or gas service to 2000 PSI NSCWP.



Non-Shock Cold Working Pressure Ratings (PSI)

| Standard Service | | H2S Service | |
|------------------|------|-------------|------|
| CWP | Test | CWP | Test |
| 2000 | 3000 | 2000 | 3000 |

FIGURE 200 THREADED

| Nominal Pipe Size | 1 | 1 1/4 | 1 1/2 | 2 | 2 1/2 | 3 | 4 | 6 | 8 | 10 |
|-----------------------------|---------------|---------------|---------------|---------------|--------------|--------------|--------------|--------------|--------------|--------------|
| Qty. / Box Part No. | 40 U020100 | 30 U021200 | 30 U021500 | 16 U020200 | 8 U022500 | 6 U020300 | 4 U020400 | 1 U020600 | 1 U020800 | 1 U021000 |
| Clearance Radius (A) | 1.94 | 2.22 | 2.41 | 2.91 | 3.63 | 4.25 | 5.00 | 6.50 | 7.81 | 9.06 |
| End to End Threaded (B) | 2.59 | 2.78 | 2.91 | 3.25 | 4.13 | 4.53 | 4.94 | 6.78 | 7.19 | 9.09 |
| Weight | 1.75 | 2.50 | 3.00 | 6.10 | 11.50 | 14.25 | 20.00 | 48.00 | 62.50 | 93.50 |
| Material, Sub Material, Nut | A105 A105 | A105 D.I. | A105 D.I. | A105 A105 | A105 A105 | A105 A105 | A105 A105 | WCB WCB | WCB WCB | WCB WCB |

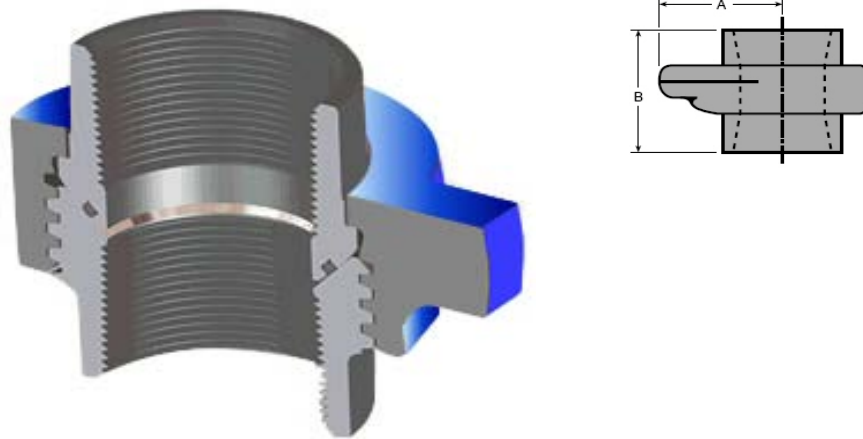
FIGURE 200 BUTT WELD & SOCKET WELD

| Nominal Pipe Size | 2 | 3 | 4 | 6 | 8 | 10 |
|-----------------------------|--------------|--------------|--------------|------------|------------|------------|
| Qty. / Box Part No. | 15 * | 6 * | 4 * | 1 * | 1 * | 1 * |
| Clearance Radius (A) | 2.91 | 4.53 | 5.00 | 6.50 | 7.81 | 9.06 |
| End to End (B) | 3.25 | 4.53 | 4.94 | 6.78 | 7.19 | 9.09 |
| Weight | 10.00 | 15.00 | 20.00 | 50.00 | 78.00 | 108.00 |
| Material, Sub Material, Nut | A105 A105 | A105 A105 | A105 A105 | WCB WCB | WCB WCB | WCB WCB |

* PART NUMBERS VARY PER BUTT WELD SCHEDULE

FIGURE 206

C&C's figure 206 has a Buna-N O-Ring that is mounted on the plain sub to provide an additional seal. Subs and nuts of the figure 206 union are interchangeable with the figure 200 and other manufacturers' parts. Recommended for air, water, oil or gas service to 2000 PSI NSCWP.



Non-Shock Cold Working Pressure Ratings (PSI)

| Standard Service | | H2S Service | |
|------------------|------|-------------|------|
| CWP | Test | CWP | Test |
| 2000 | 3000 | 2000 | 3000 |

FIGURE 206 THREADED

| Nominal Pipe Size | 1 | 1 1/4 | 1 1/2 | 2 | 2 1/2 | 3 | 4 | 6 | 8 | 10 |
|--------------------------------|---------------|---------------|---------------|---------------|--------------|--------------|--------------|--------------|--------------|--------------|
| Qty. / Box Part No. | 40 U260100 | 30 U261200 | 30 U260500 | 16 U260200 | 8 U262500 | 6 U260300 | 4 U260400 | 1 U260600 | 1 U260800 | 1 U261000 |
| Clearance Radius (A) | 1.94 | 2.22 | 2.41 | 2.91 | 3.63 | 4.25 | 5.00 | 6.50 | 7.81 | 9.06 |
| End to End Threaded (B) | 2.59 | 2.78 | 2.91 | 3.25 | 4.13 | 4.53 | 4.94 | 6.78 | 7.19 | 9.09 |
| Weight | 1.75 | 2.40 | 3.20 | 6.10 | 10.50 | 14.25 | 20.00 | 48.00 | 62.50 | 93.50 |
| Material, Sub Material, Nut | A105 A105 | A105 A105 | A105 A105 | A105 A105 | A105 A105 | A105 A105 | A105 A105 | WCB WCB | WCB WCB | WCB WCB |

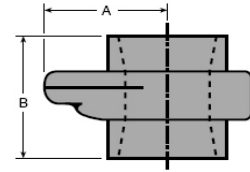
FIGURE 206 BUTT WELD

| Nominal Pipe Size | 2 | 3 | 4 | 6 | 8 | 10 |
|--------------------------------|--------------|--------------|--------------|------------|------------|------------|
| Qty. / Box Part No. | 16 * | 6 * | 4 * | 1 * | 1 * | 1 * |
| Clearance Radius (A) | 2.91 | 4.25 | 5.00 | 6.50 | 7.81 | 9.06 |
| End to End (B) | 3.25 | 4.53 | 4.83 | 6.78 | 7.19 | 9.09 |
| Weight | 5.80 | 15.00 | 18.00 | 47.00 | 65.00 | 95.00 |
| Material, Sub Material, Nut | A105 A105 | A105 A105 | A105 A105 | WCB WCB | WCB WCB | WCB WCB |

* PART NUMBERS VARY PER BUTT WELD SCHEDULE

FIGURE 207

C&C's blanking cap with a Buna-N O-Ring seal provides an efficient and dependable closure. The threaded sub is interchangeable with figure 200 threaded sub and other manufactures' parts. Recommended for air, water, oil, or gas service to 2000 PSI NSCWP.



Non-Shock Cold Working Pressure Ratings (PSI)

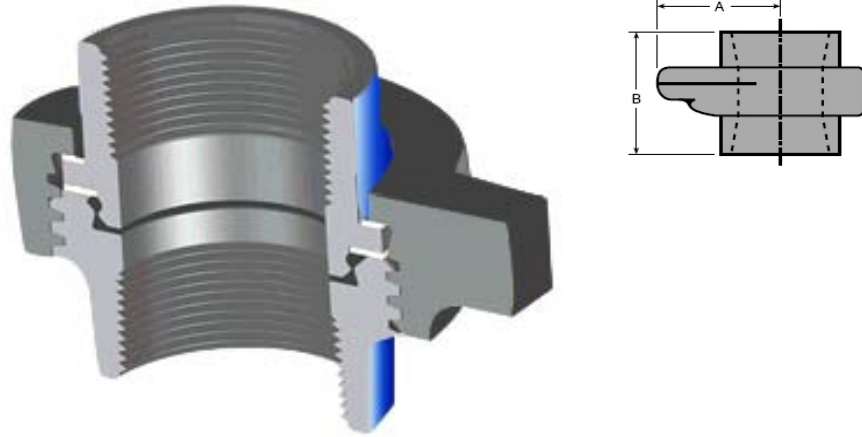
| Standard Service | | H2S Service | |
|------------------|------|-------------|------|
| CWP | Test | CWP | Test |
| 2000 | 3000 | 2000 | 3000 |

FIGURE 207 THREADED

| Nominal Pipe Size | 3 | 4 | 6 |
|-------------------------|---------|---------|---------|
| Qty. / Box | 6 | 4 | 1 |
| Part No. | U270300 | U270400 | U270600 |
| Clearance Radius (A) | 2.88 | 3.59 | 4.97 |
| End to End Threaded (B) | 3.75 | 4.31 | 5.81 |
| Weight | 10.25 | 16.75 | 59.00 |
| Material, Sub | A105 | A105 | A105 |
| Material, Cap | D.I. | D.I. | D.I. |

FIGURE 211

C&C's Figure 211 (Insulating Union) is constructed of forged carbon steel. This union has insulating seals and flange rings. Recommended for 2,000 PSI systems where static or electrolytic corrosion is a problem.



Non-Shock Cold Working Pressure Ratings (PSI)

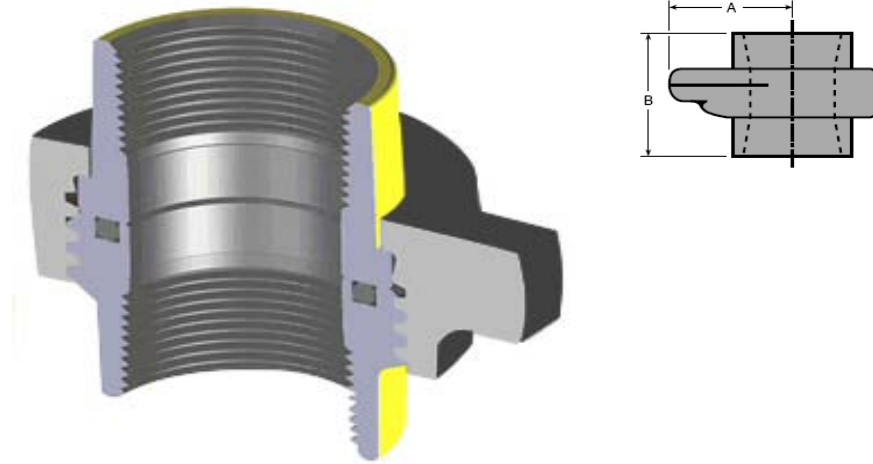
| Standard Service | | H2S Service | |
|------------------|------|-------------|------|
| CWP | Test | CWP | Test |
| 2000 | 3000 | - | - |

FIGURE 211 THREADED

| Nominal Pipe Size | 2 | 3 |
|-----------------------------|--------------|--------------|
| Qty. / Box | 16 | 6 |
| Part No. | U110200 | U110300 |
| Clearance Radius (A) | 3.13 | 4.00 |
| End to End Threaded (B) | 3.50 | 4.50 |
| Weight | 6.25 | 12.50 |
| Material, Sub Material, Nut | A105 A105 | A105 A105 |

FIGURE 300

C&C's Figure 300 is manufactured from forged carbon steel. This Flat-Face union has an O-Ring seal. Recommended for interchangeability where straight breakout of short pipe segments is required up to 2,000 PSI NSCWP.



Non-Shock Cold Working Pressure Ratings (PSI)

| Standard Service | | H2S Service | |
|------------------|------|-------------|------|
| CWP | Test | CWP | Test |
| 2000 | 3000 | - | - |

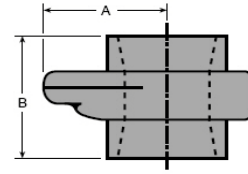
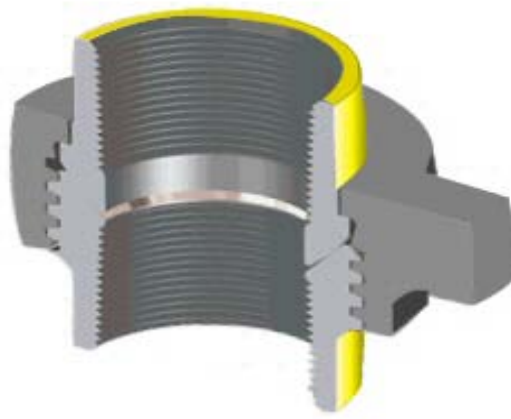
FIGURE 300 THREADED

| | |
|-------------------------|---------|
| Nominal Pipe Size | 2 |
| Qty. / Box | 16 |
| Part No. | U030200 |
| Clearance Radius (A) | 5.50 |
| End to End Threaded (B) | 3.81 |
| Weight | 6.00 |
| Material, Sub | A105* |
| Material, Nut | A105 |

*Also available with 316SS Subs

FIGURE 301

C&C's unique Figure 301 is a union of great utility. It meets most requirements in the medium pressure ranges. Precision seating surfaces assure dependable pressure seal. Recommended for air, water, oil or gas service to 3000 PSI NSCWP.



Non-Shock Cold Working Pressure Ratings (PSI)

| Standard Service | | H2S Service | |
|------------------|------|-------------|------|
| CWP | Test | CWP | Test |
| 3000 | 4500 | - | - |

FIGURE 301 THREADED

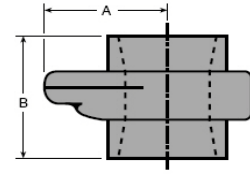
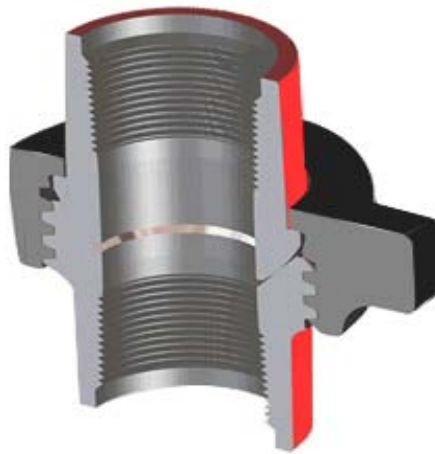
| | |
|--------------------------------|---------------|
| Nominal Pipe Size | 2 |
| Qty. / Box Part No. | 16 U210200 |
| Clearance Radius (A) | 2.91 |
| End to End Threaded (B) | 3.75 |
| Weight | 5.80 |
| Material, Sub Material, Nut | A105 A105 |

FIGURE 301 SOCKET WELD

| | |
|--------------------------------|------------------|
| Nominal Pipe Size | 2 |
| Qty. / Box Part No. | 16 U210200-SW |
| Clearance Radius (A) | N/A |
| End to End (B) | 3.75 |
| Weight | 5.80 |
| Material, Sub Material, Nut | A105 A105 |

FIGURE 400

C&C's figure 400 features a precision ball and cone sealing surface for sure metal-to-metal seal. Recommended for air, water, oil, gas and mud service to 4,000 PSI NSCWP.



Non-Shock Cold Working Pressure Ratings (PSI)

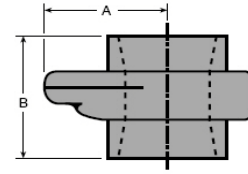
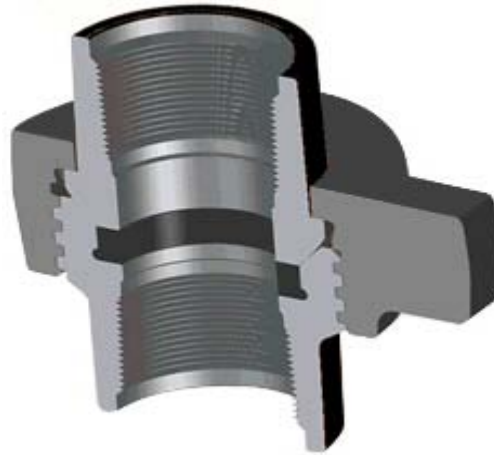
| Standard Service | | H2S Service | |
|------------------|------|-------------|------|
| CWP | Test | CWP | Test |
| 4000 | 6000 | 4000 | 6000 |

FIGURE 400 THREADED

| Nominal Pipe Size | 2 | 3 | 4 | 12 |
|-----------------------------|--------------|--------------|--------------|--------------|
| Qty. / Box | 6 | 4 | 3 | 1 |
| Part No. | U040200 | U040300 | U040400 | U041200 |
| Clearance Radius (A) | 3.56 | 4.25 | 5.00 | 10.88 |
| End to End Threaded (B) | 5.25 | 6.19 | 8.22 | 11.13 |
| Weight | 11.00 | 19.75 | 29.50 | 165.00 |
| Material, Sub Material, Nut | A105 1045 | A105 A105 | A105 A105 | A105 A105 |

FIGURE 402

C&C's figure 402 has a resilient lip-type seal plus 9 precision metal-to-metal seal. Recommended for air, water, oil or mud service to 4,000 PSI NSCWP.



Non-Shock Cold Working Pressure Ratings (PSI)

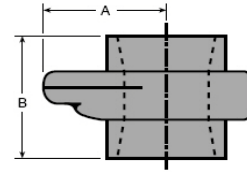
| Standard Service | | H2S Service | |
|------------------|------|-------------|------|
| CWP | Test | CWP | Test |
| 4000 | 6000 | 4000 | 6000 |

FIGURE 402 THREADED

| | |
|-------------------------|---------|
| Nominal Pipe Size | 2 |
| Qty. / Box | 6 |
| Part No. | U040200 |
| Clearance Radius (A) | 3.56 |
| End to End Threaded (B) | 5.25 |
| Weight | 10.50 |
| Material, Sub | A105 |
| Material, Nut | A105 |

FIGURE CGC

C&C's Figure CGC is made with LPT Ends, and manufactured from forged carbon steel. This union has a "vee lip" type Seal Ring. Recommended for interchangeability with like line or manifold connections and up to 6,000 PSI CWP.



Non-Shock Cold Working Pressure Ratings (PSI)

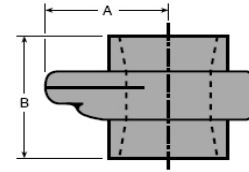
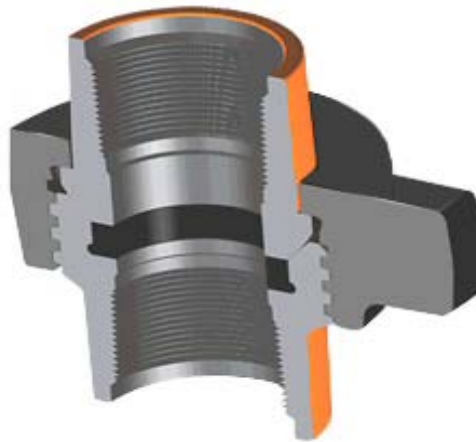
| Standard Service | | H2S Service | |
|------------------|------|-------------|------|
| CWP | Test | CWP | Test |
| 6000 | 9000 | 6000 | 9000 |

FIGURE CGC THREADED

| Nominal Pipe Size | 1 1/2 | 2 |
|-------------------------|---------|---------|
| Qty. / Box | 12 | 6 |
| Part No. | UC61500 | UC60200 |
| Clearance Radius (A) | 5.25 | 6.25 |
| End to End Threaded (B) | 4.38 | 5.75 |
| Weight | 7.30 | 12.50 |
| Material, Sub | 4130 AS | 4130 AS |
| Material, Nut | 4140 AS | 4140 AS |

FIGURE 602

C&C's Figure 602 has a lip-type seal ring of Buna-N specifically designed to minimize fluid flow turbulence. The lip-type ring also provides a pressure seal and protection for the metal-to-metal seating surfaces. These unions are recommended for manifold and truck mounting where size and weight are critical. Recommended for air, water, oil, gas or mud service up to 6000 PSI NSCWP.



Non-Shock Cold Working Pressure Ratings (PSI)

| Standard Service | | H2S Service | |
|------------------|------|-------------|------|
| CWP | Test | CWP | Test |
| 6000 | 9000 | 6000 | 9000 |

FIGURE 602 THREADED

| Nominal Pipe Size | 1 | 1 1/4 | 1 1/2 | 2 | 3 | 4 |
|--------------------------------|--------------------|--------------------|---------------|--------------------|--------------------|--------------------|
| Qty. / Box Part No. | 32 U620100 | 10 U621200 | 10 U620500 | 6 U620200 | 4 U620300 | 2 U620400 |
| Clearance Radius (A) | 2.16 | 3.25 | 3.25 | 3.75 | 4.50 | 5.25 |
| End to End Threaded (B) | 3.53 | 4.88 | 4.88 | 5.25 | 6.25 | 8.25 |
| Weight | 3.75 | 10.00 | 10.00 | 12.75 | 21.50 | 33.25 |
| Material, Sub Material, Nut | 4130 AS 4140 AS | 4130 AS 4140 AS | A105 A105 | 4130 AS 4140 AS | 4130 AS 4140 AS | 4130 AS 4140 AS |

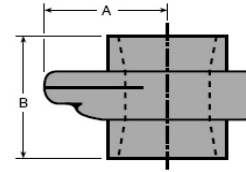
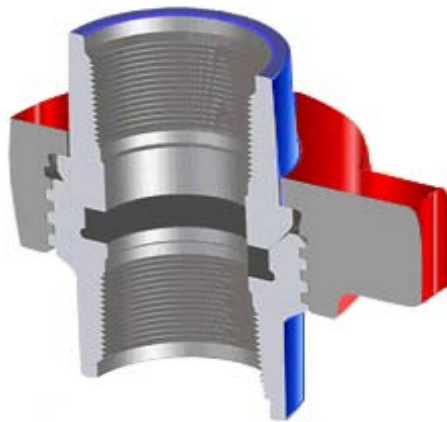
FIGURE 602 BUTT WELD

| Nominal Pipe Size | 2 | 3 | 4 |
|--------------------------------|--------------------|--------------------|--------------------|
| Qty. / Box Part No. | 6 * | 4 * | 2 * |
| Clearance Radius (A) | 3.75 | 4.50 | 5.25 |
| End to End (B) | 5.03 | 5.44 | 6.06 |
| Weight | 12.50 | 21.60 | 34.50 |
| Material, Sub Material, Nut | 4130 AS 4140 AS | 4130 AS 4140 AS | 4130 AS 4140 AS |

* PART NUMBERS VARY PER BUTT WELD SCHEDULE

FIGURE 1002

C&C's Figure 1002 has a replaceable lip-type seal ring of Buna-N specifically designed to minimize fluid flow turbulence. The lip-type ring works similarly to the Figure 602 Union. These unions are for use on high pressure systems and trucks. Recommended for air, water, oil, gas and mud service up to 10,000 PSI NSCWP.



Non-Shock Cold Working Pressure Ratings (PSI)

| Standard Service | | H2S Service | |
|------------------|-------|-------------|-------|
| CWP | Test | CWP | Test |
| 10000 | 15000 | 7500 | 12000 |

FIGURE 1002 THREADED

| Nominal Pipe Size | 1 | 2 | 3 | 4 | 5 |
|--------------------------------|--------------------|--------------------|--------------------|--------------------|--------------------|
| Qty. / Box Part No. | 32 U120100 | 6 U120200 | 4 U120300 | 2 U120400 | 1 U120500 |
| Clearance Radius (A) | 2.38 | 3.75 | 4.50 | 5.25 | 6.13 |
| End to End Threaded (B) | 3.53 | 5.25 | 6.25 | 8.25 | 6.25 |
| Weight | 3.60 | 12.20 | 22.40 | 35.40 | 71.75 |
| Material, Sub Material, Nut | 4130 AS 4140 AS | 4130 AS 4140 AS | 4130 AS 4140 AS | 4130 AS 4140 AS | 4130 AS 4140 AS |

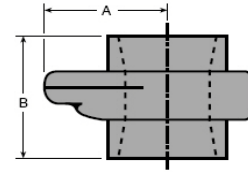
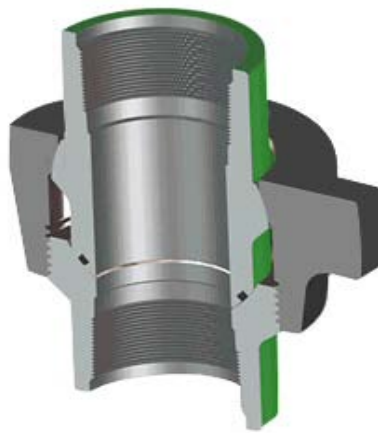
FIGURE 1002 BUTT WELD

| Nominal Pipe Size | 2 | 3 | 4 | 5 | 6 |
|--------------------------------|--------------------|--------------------|--------------------|--------------------|--------------------|
| Qty. / Box Part No. | 6 * | 4 * | 2 * | 1 * | 1 * |
| Clearance Radius (A) | 3.75 | 4.50 | 5.25 | 6.13 | 7.75 |
| End to End (B) | 5.03 | 5.44 | 5.69 | 5.94 | 7.50 |
| Weight | 14.20 | 24.50 | 30.00 | 71.75 | 99.00 |
| Material, Sub Material, Nut | 4130 AS 4140 AS | 4130 AS 4140 AS | 4130 AS 4140 AS | 4130 AS 4140 AS | 4130 AS 4140 AS |

* PART NUMBERS VARY PER BUTT WELD SCHEDULE

FIGURE 1003

C&C's Figure 1003 (Mis-aligning Union) has LPT or Butt Weld Ends. It is constructed of Forged Alloy Steel, and comes with a Nitrile O-Ring. Recommended for high pressure water, oil, mud or gas service where alignment of piping is a problem, with up to 7 1/2° angular adjustment from center (15° total).



Non-Shock Cold Working Pressure Ratings (PSI)

| Standard Service | | H2S Service | |
|------------------|-------|-------------|------|
| CWP | Test | CWP | Test |
| 10000 / 7500 | 12000 | 5000 | 7500 |

FIGURE 1003 THREADED

| Nominal Pipe Size | 3 | 4 |
|-----------------------------|--------------------|--------------------|
| Qty. / Box | 2 | 1 |
| Part No. | U130300 | U130400 |
| Clearance Radius (A) | 4.88 | 5.75 |
| End to End Threaded (B) | 9.13 | 10.94 |
| Weight | 45.00 | 76.80 |
| Material, Sub Material, Nut | 4130 AS 4140 AS | 4130 AS 4140 AS |

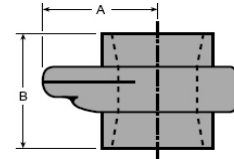
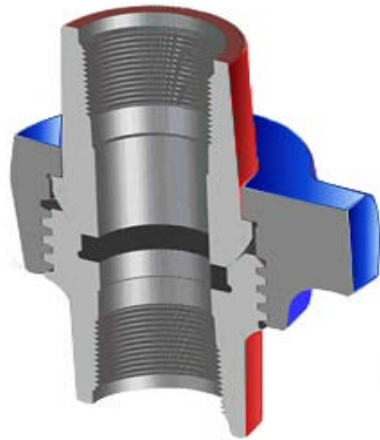
FIGURE 1003 BUTT WELD

| Nominal Pipe Size | 3 | 4 | 5 | 6 |
|-----------------------------|--------------------|--------------------|--------------------|--------------------|
| Qty. / Box | 2 | 1 | 1 | 1 |
| Part No. | U130340 | U130440 | U130540 | U130640 |
| Clearance Radius (A) | 4.88 | 5.75 | 5.75 | * |
| End to End (B) | 9.13 | 10.94 | 10.94 | * |
| Weight | 44.50 | 76.80 | 79.80 | 140.00 |
| Material, Sub Material, Nut | 4130 AS 4140 AS | 4130 AS 4140 AS | 4130 AS 4140 AS | 4130 AS 4140 AS |

*PLEASE CONTACT FACTORY FOR DETAILS

FIGURE 1502

C&C's Figure 1502 has a replaceable lip-type seal ring of Buna-N specifically designed to minimize fluid flow turbulence. The lip-type ring also provides a pressure seal and protection for the metal-to-metal seating surfaces. These unions are recommended for manifold and truck mounting or other installations where extreme high pressure is encountered. Recommended for air, water, oil, gas, and mud service up to 15,000 PSI



Non-Shock Cold Working Pressure Ratings (PSI)

| Standard Service | | H2S Service | |
|------------------|-------|-------------|-------|
| CWP | Test | CWP | Test |
| 15000 | 22500 | 10000 | 15000 |

FIGURE 1502 THREADED

| Nominal Pipe Size | 1 | 1 1/2 | 2 | 3 | 4 |
|--------------------------------|--------------------|-------|--------------------|--------------------|--------------------|
| Qty. / Box Part No. | 15 U150100 | | 5 U150200 | 4 U150300 | 1 U150400 |
| Clearance Radius (A) | 2.78 | | 4.00 | 4.88 | 6.00 |
| End to End Threaded (B) | 4.39 | | 7.00 | 7.63 | 8.50 |
| Weight | 8.80 | | 20.00 | 29.80 | 71.00 |
| Material, Sub Material, Nut | 4130 AS 4140 AS | | 4130 AS 4140 AS | 4130 AS 4140 AS | 4130 AS 4140 AS |

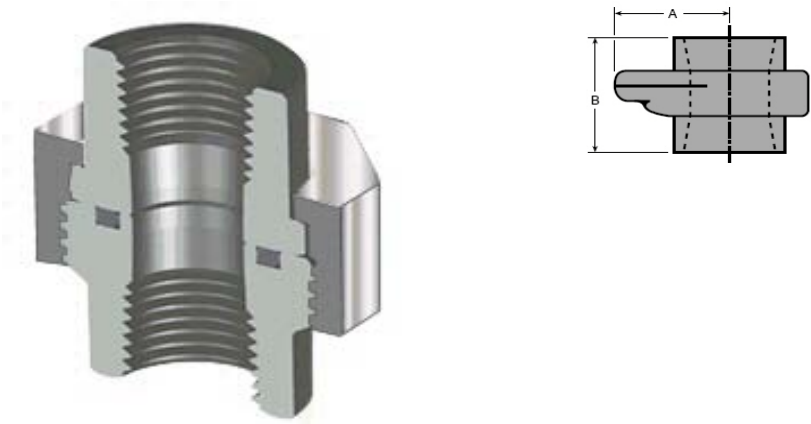
FIGURE 1502 BUTT WELD

| Nominal Pipe Size | 2 | 3 | 4 |
|-------------------------|--------------------|--------------------|--------------------|
| Qty. / Box Part No. | 5 * | 4 * | 1 * |
| Clearance Radius (A) | 4.00 | 4.88 | 6.00 |
| End to End (B) | 6.25 | 5.25 | 10.50 |
| Weight | 20.00 | 30.00 | 84.00 |
| Material, Sub | 4130 AS 4140 AS | 4130 AS 4140 AS | 4130 AS 4140 AS |

* PART NUMBERS VARY PER BUTT WELD SCHEDULE

FIGURE OCT

C&C's Figure OCT is manufactured from forged and normalized carbon steel to ASTM A105 and precision machined in dimensional compliance with MSS SP 83. Based on the original design standard from the Association of American Railroads.



Non-Shock Cold Working Pressure Ratings (PSI)

| Standard Service | | H2S Service | |
|------------------|------|-------------|------|
| CWP | Test | CWP | Test |
| 3000 | 4000 | - | - |

FIGURE OCT THREADED

| Nominal Pipe Size | 1 | 2 |
|-------------------------|------------------|------------------|
| Qty. / Box | 40 | 16 |
| Part No. | U300010 0-INS | U300020 0-INS |
| Clearance Radius (A) | 2.56 | 4.09 |
| End to End Threaded (B) | 2.60 | 3.52 |
| Weight | 2.00 | 6.50 |
| Material, Sub | A105 | A105 |
| Material, Nut | A105 | A105 |

WARNINGS AND CAUTIONS

C&C Industries cannot foresee all of the situations a user may encounter while installing and using C&C products. Therefore, the use of C&C products requires informed common sense and heightened safety. Users must follow all applicable industry specifications and practices on the safe installation and use of these products.

!! WARNING !!

****Failure to follow these safety guidelines could result in serious bodily injury even death****

Never mix components with different pressure ratings. Mismatched union parts may fail under pressure resulting in death, personal injury, or property damage.

Never strike, tighten, or loosen pressurized components or connections.

Never exceed the rated NSCWP of the product.

Complete and proper assembly of components and connections is required to attain the rated NSCWP. Always apply essential care and attention to threaded parts before, during, and after assembly.

Never use severely worn, eroded, or corroded products.

Never strike hammer union nuts that have deformed or flattened lugs. This condition can result in flying shrapnel leading to serious personal injury and must be addressed by either grinding off extruded material or removing the nut from service.

Never exceed the load rating of lifting devices on products or lifting equipment. Use of C&C products in suspension applications can result in over-stress conditions leading to catastrophic failure.

Always use safe practices when manually lifting or carrying products.

Always select only the appropriate product and materials for the intended service:

- Never expose standard service products to sour gas fluids. Do not interchange sour gas with standard service components.
- Always use extra care when working with carbon steel products in below freezing temperatures. Freezing temperatures will lower the impact strength.

Always use manufacturers' instructions and Material Safety Data Sheet directions when using solvents.

Always make sure that personnel and facilities are protected from residual hazardous fluids before disassembly of C&C products.

Whenever leakage is detected, remove them from service immediately to prevent conditions that may lead to death, serious personal injury, or property damage.

Always use safety glasses and appropriate protective equipment when working with C&C Pipe Unions.